

2010 Festival of Stamps Royal Mail marks a special occasion with two miniature sheets



TWO MINIATURE SHEETS will be issued in May to commemorate the 2010 Festival of Stamps. The issue coincides with the international stamp exhibition in London, which takes place from 8 to 15 May.

The first sheet, entitled 'Accession of King George v', will be issued on 6 May, the centenary of the King's accession. It bears a 1st class 'double head' stamp, George v and Elizabeth II, and a £1 stamp showing the two heads of George v as used on stamps of his reign. The 1st class double head stamp

will also be issued in ordinary sheets. This sheet, designed by Sedley Place, is printed in lithography by Cartor Security Printing. The sheet size is 140 x 74mm, and the two stamps are 33 x 24mm.

The second miniature sheet goes on sale on 8 May, the opening day of the London 2010 international stamp exhibition. It bears two 1st class stamps reproducing the British Empire Exhibition stamps of 1924 (the first British commemorative stamps) and two £1 stamps reproducing the 10s and £1 'Seahorse' high values. This sheet was also designed by Sedley Place, and printed by Joh Enschede Stamps in recess (intaglio) and lithography. The sheet measures 115 x 89mm, the Empire Exhibition stamps 45 x 34mm, and the £1 Seahorse stamps 60 x 34mm.

Festival of Stamps prices

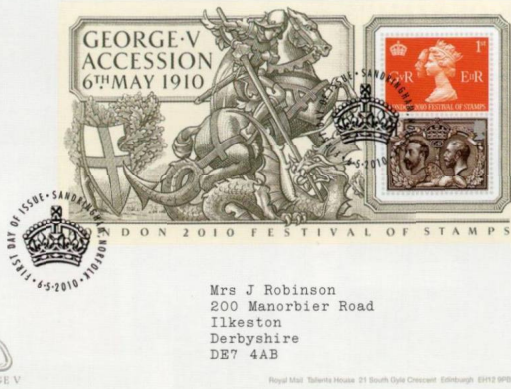
Miniature sheet (6 May)	£ 1.41
Press sheet	£31.00
Miniature sheet (8 May sheet)	£ 2.82
Presentation pack (both sheets)	£ 4.75
First day cover envelopes (each)	£ 0.30
Serviced first day cover 6 May (UK customers)	£ 2.13
Serviced first day cover 6 May (overseas customers)	£ 1.82
Serviced first day cover 8 May (UK)	£ 3.79
Serviced first day cover 8 May (overseas)	£ 3.23
Stamp cards (set of eight)	£ 3.20
1st class Double Head stamp	£ 0.41
Prestige stamp book	£11.15
PSB stamp pane first day cover (UK)	£ 4.33
PSB stamp pane first day cover (overseas)	£ 3.69



LONDON 2010 FESTIVAL OF STAMPS



Royal Mail First Day Cover



ACCESSION OF KING GEORGE V

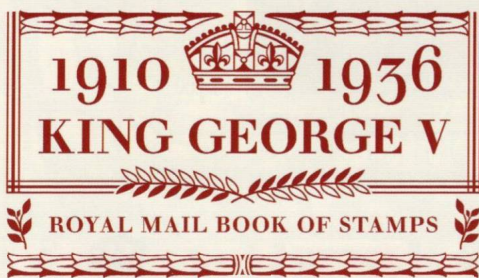


FIRST DAY FACILITIES Orders for serviced FDCs must reach Tallents House by the days of issue. For the 6 May issue, collectors may send stamped covers to Royal Mail Tallents House, 21 South Gyle Crescent, Edinburgh EH12 9PB (for Tallents House postmark), or to their nearest Royal Mail Special Handstamp Centre (Sandringham postmark) marking the outer envelope 'FD1021' or 'FD1022'. Covers can be posted or handed in at main Post Office branches for the Sandringham postmark. For the 8 May issue, covers should again be sent to Tallents House or your nearest Special Handstamp Centre for the London N1 postmark, requesting postmarks 'FD1023' or 'FD1024'.

For details of sponsored handstamps and addresses of the Handstamp Centres, see the *British Postmark Bulletin* – see page 212 for subscription rates, and for details of how to obtain a free sample copy. ▶

Festival of Stamps Prestige stamp book

A PRESTIGE BOOK, entitled *1910 1936 King George V*, will be available from 8 May. Written by Douglas Muir of the British Postal Museum & Archive, it features stamps from George V's stamp collection, details of the heads used on stamps of his reign, the Coronation Aerial Post (1911), the Empire air mail scheme, the Seahorse stamps, the Post Office underground railway, the Empire Exhibition, Postal Union Congress, and Silver Jubilee commemorative issues. The well-illustrated and colourful book will appeal to all interested in the stamps and postal services of George V's reign. The definitive pane (below, at bottom right) will be used on the serviced Royal Mail first day covers •



Following a royal warrant issued in 1911, the design of the Great Seal of the United Kingdom, which had been used since 1801, was replaced by a new design. A circular gold-colored stamp featuring the profile of King George V and the words 'POST OFFICE' and 'LONDON' was issued.



Festival of Stamps PSB The book will contain four panes:

Pane 1 Top and bottom rows: £1 George V double head and 1st class George V/Elizabeth II double head. Middle row: the same stamps but in reverse order

Pane 2 Seahorse stamps: £1 top, 10s below

Pane 3 Empire Exhibition stamps: top row 1924 1½d value, 1d value; below stamps in reverse order

Pane 4 Definitive stamps (self-adhesive with security features): top & bottom rows 1st, 2nd, 1st; middle row 50p, label (George V head), 50p

